



Do ecosystem services have a biological cost?

Ozone and climate regulation by Norway spruce forests along an Alpine altitudinal transect in Trentino, northern Italy

Elena Gottardini, Fabiana Cristofolini, Antonella Cristofori

Research and Innovation Centre, Fondazione Edmund Mach (FEM)

San Michele all'Adige, Trento, Italy

Marco Ferretti

TerraData environmetrics

Monterotondo M.mo, Grosseto, Italy

Scheme of the presentation

- Introduction
 - Ozone and impact on ecosystem services provided by forests
- The study on *Picea abies* along an altitudinal transect on Alps
 - Study design
 - Measurements of environmental and tree response variables
- Results
 - Environmental variables
 - Ozone removal
 - Relationship between ozone removal and
 - (i) structural/environmental variables
 - (ii) tree responses
- Discussion
 - Functional interpretation of monitoring data
 - Possible biological costs of removing ozone

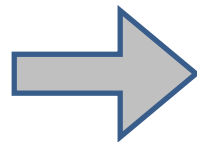


Introduction

Ecosystem services

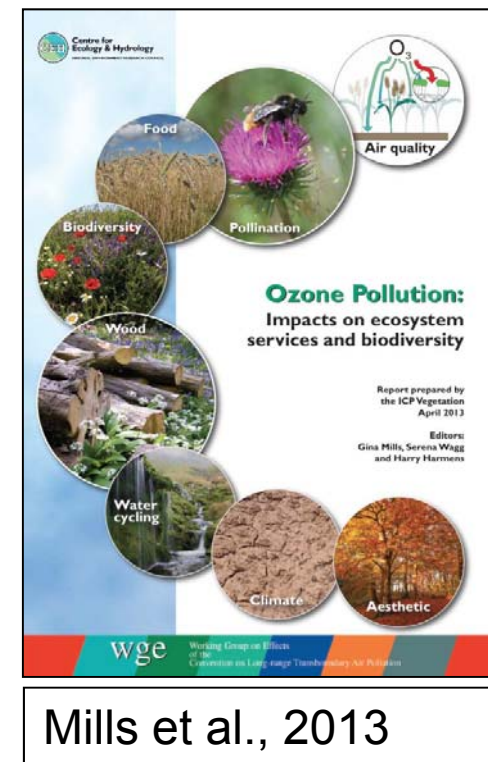
- Cultural
- Provisioning
- Supporting
- Regulating

Regulating services of forests



- Slope stability
- Water cycle regulation
- Carbon storage
- Climate regulation
- Air pollutant removal

Ecosystem services
benefits people obtain from
ecosystems



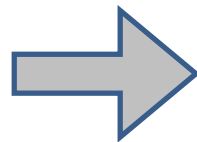
Mills et al., 2013

Introduction

Ecosystem services

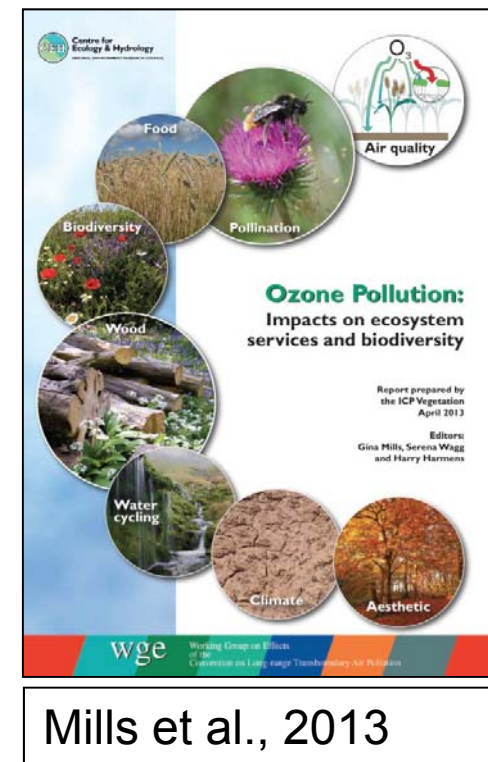
- Cultural
- Provisioning
- Supporting
- Regulating

Regulating services of forests



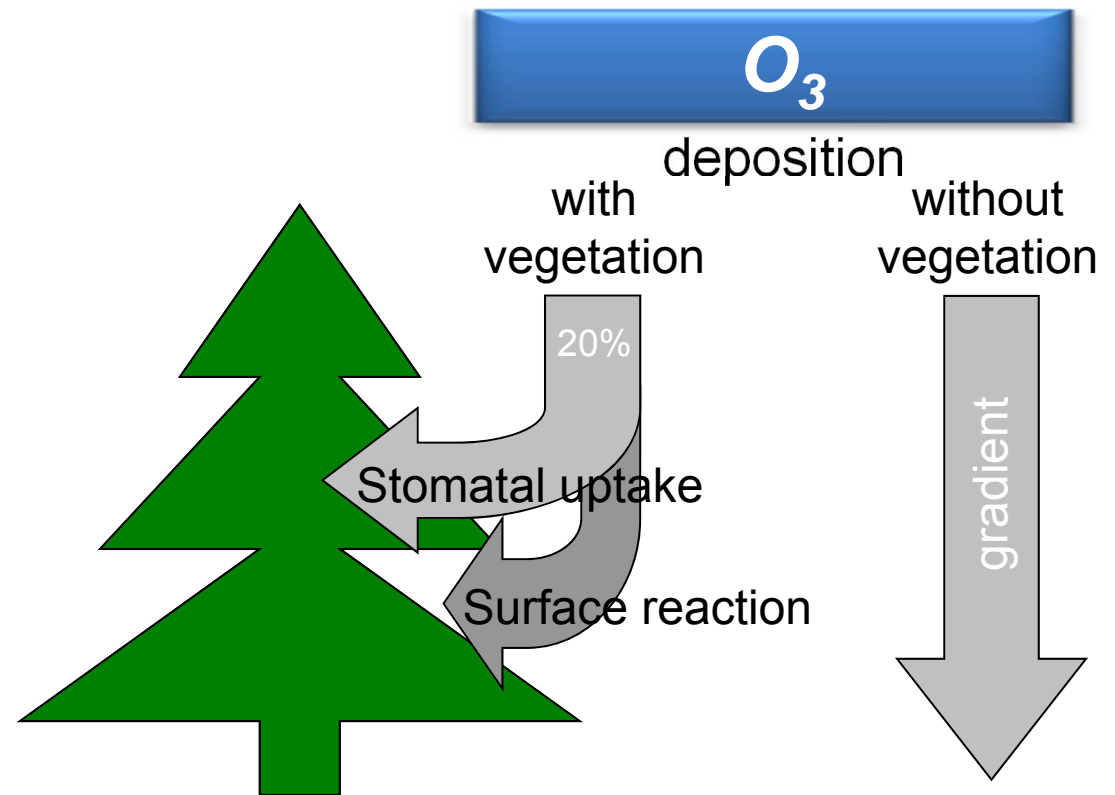
- Slope stability
- Water cycle regulation
- Carbon storage
- Climate regulation
- **Air pollutant removal**

Ecosystem services
benefits people obtain from
ecosystems



Mills et al., 2013

- Ozone can potentially affect the vegetation:
 - phytotoxicity
 - high values
 - wide distribution in remote areas
- Forests may reduce ozone through stomatal and non-stomatal deposition



Aim of the study is to assess the size of ozone regulating services provided by forests:

- i) the portion of ozone removed by vegetation
- ii) if ozone removal may have a biological cost for plants

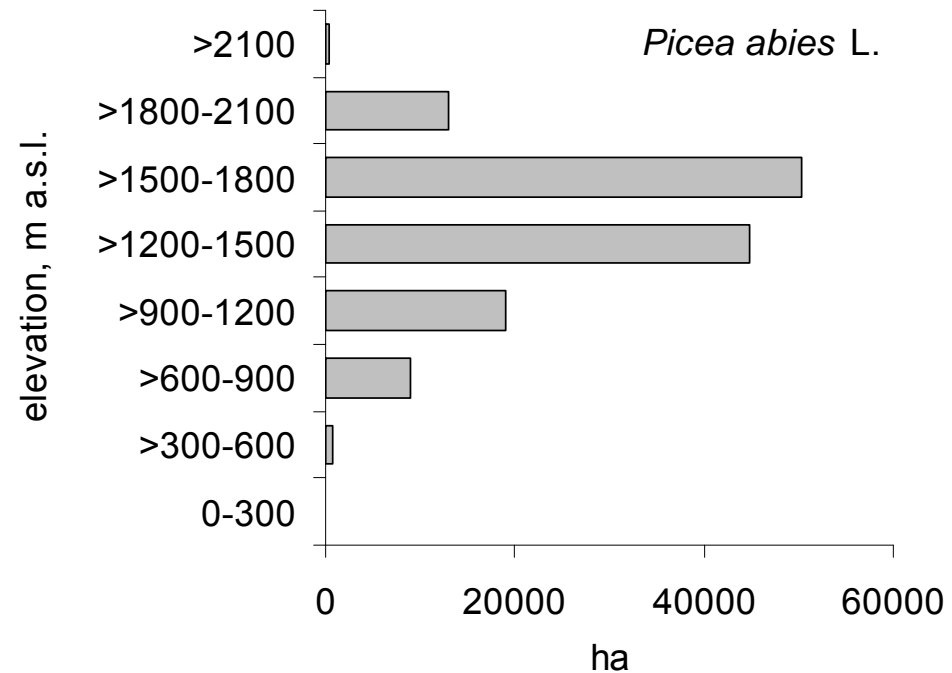
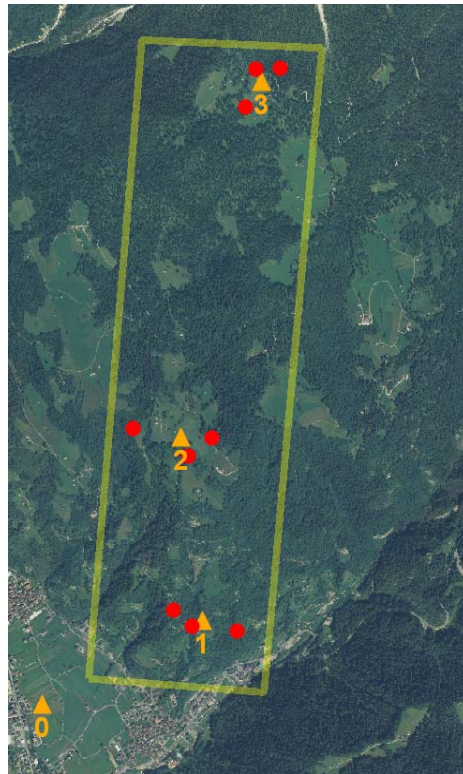
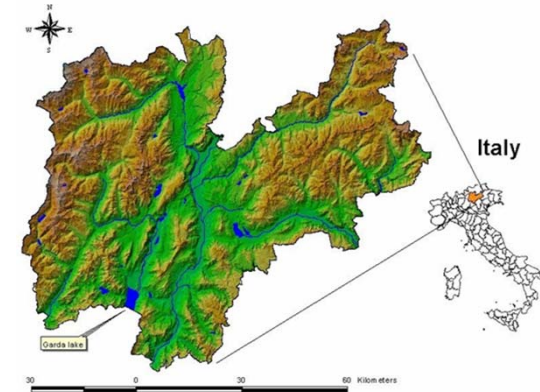
Scheme of the presentation

- Introduction
 - Ozone and impact on ecosystem services provided by forests
- The study on *Picea abies* along an altitudinal transect on Alps
 - Study design
 - Measurements of environmental and tree response variables
- Results
 - Environmental variables
 - Ozone removal
 - Relationship between ozone removal and
 - (i) structural/environmental variables
 - (ii) tree responses
- Discussion
 - Functional interpretation of monitoring data
 - Possible biological costs of removing ozone



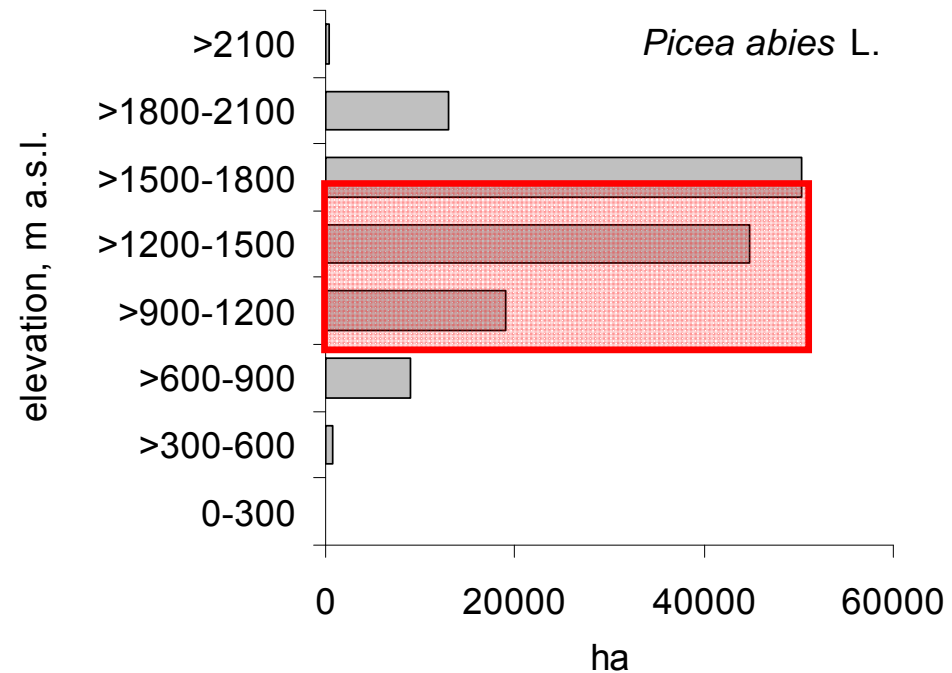
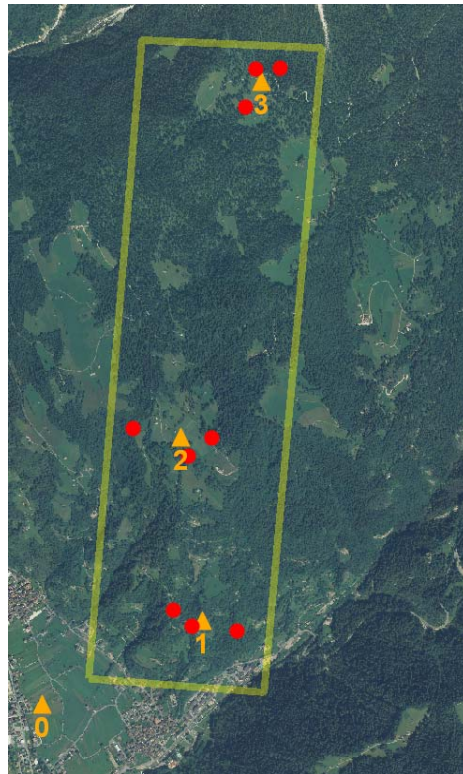
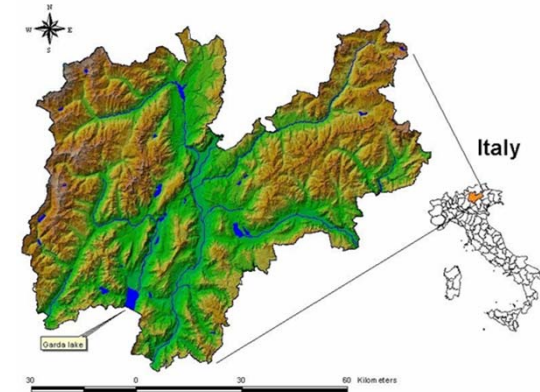
Study design

Fully randomized study on Norway spruce along an **altitudinal gradient** (900 - 1600 m a.s.l.) in Trentino, north Italy

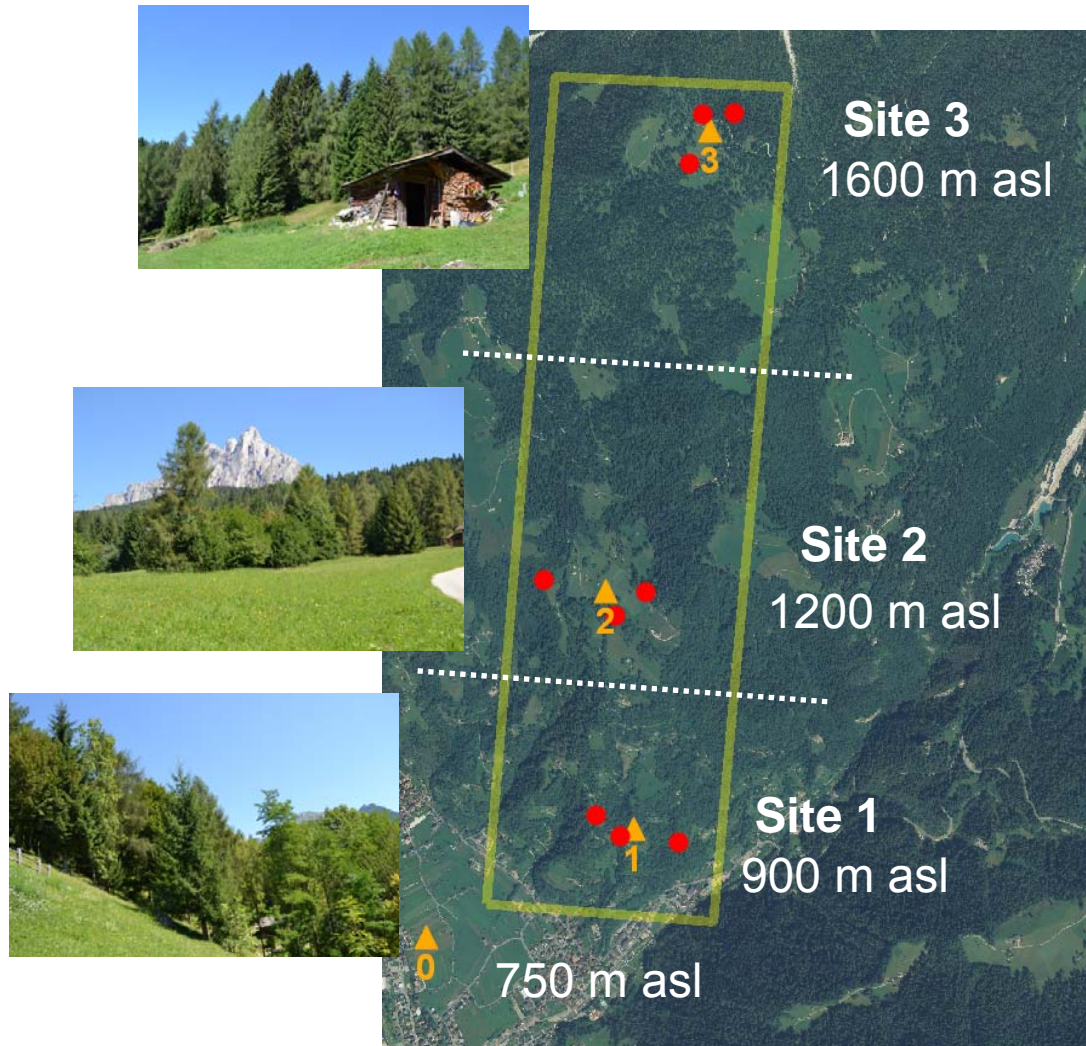


Study design

Fully randomized study on Norway spruce along an **altitudinal gradient** (900 - 1600 m a.s.l.) in Trentino, north Italy

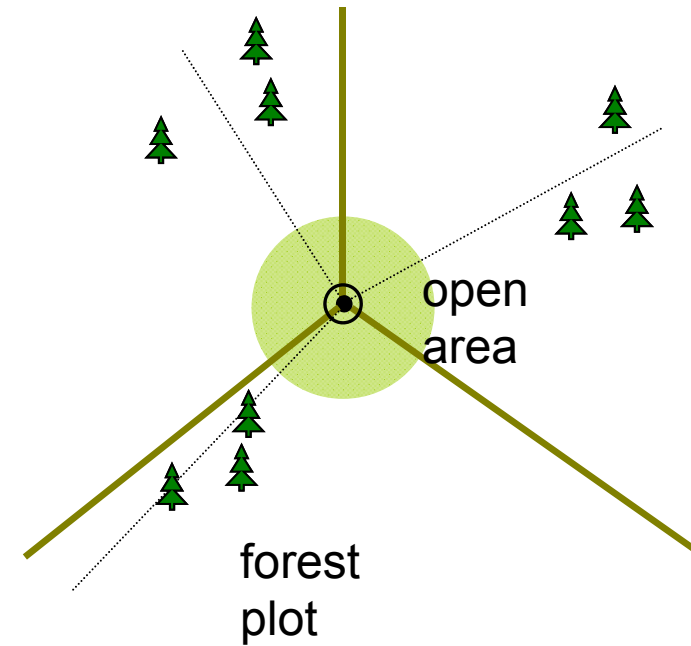


Study design

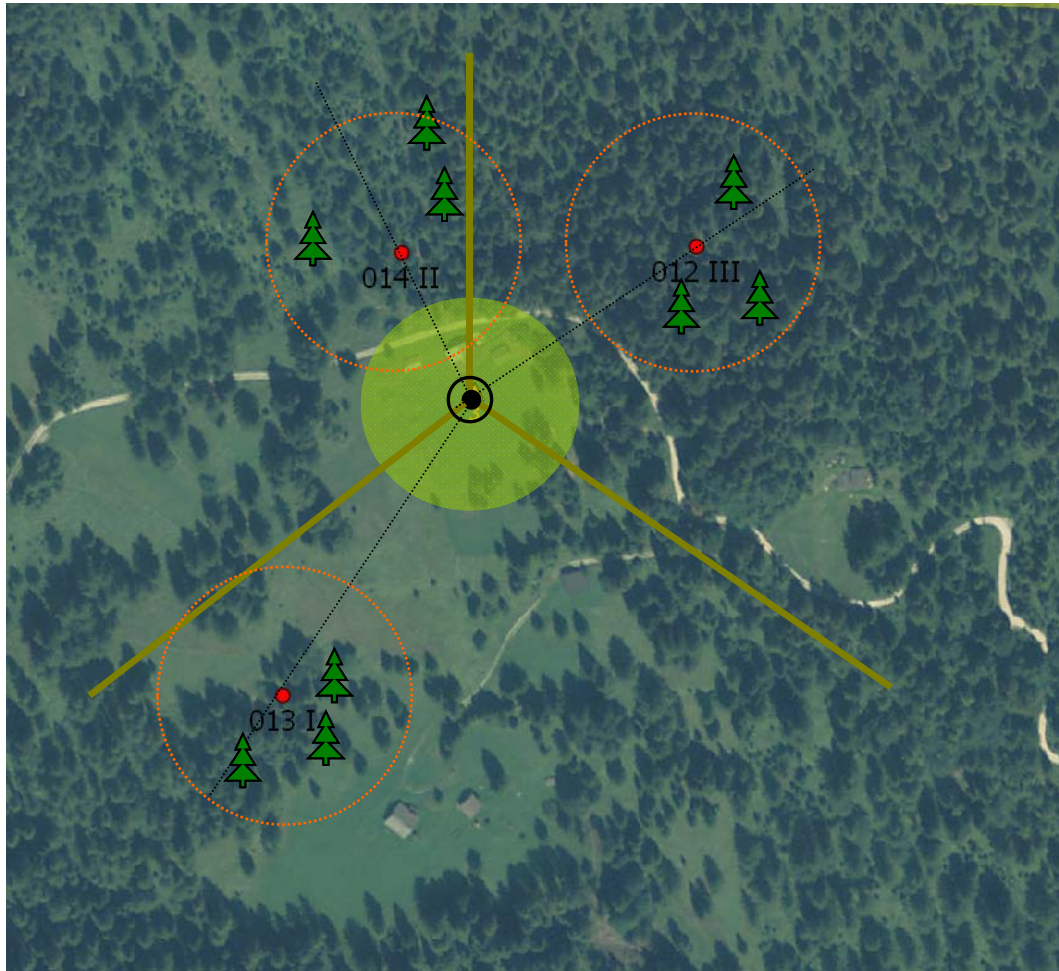


Statistical selection of:

- 3 + 1 sites (open area)
- 3 x 3 plot (forest)



Environmental variables



In each forest plot and open area, measurement at 2 m of:

Passive sampling:

- Ozone
- Nitrogen dioxide

Data logger:

- Temperature
- Relative humidity

Period: May - August 2013

Tree response variables



Tree health

- Crown condition (n=27 trees)

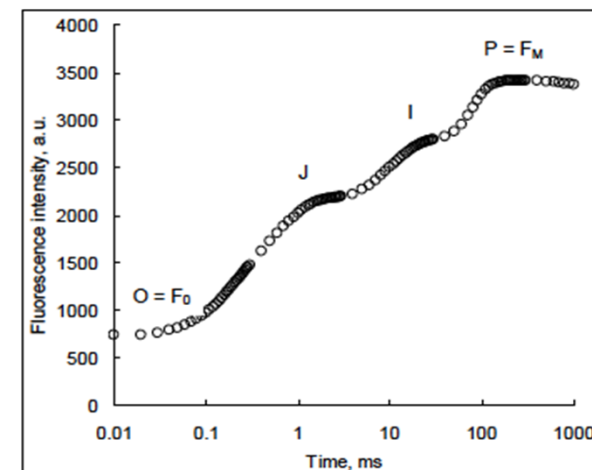
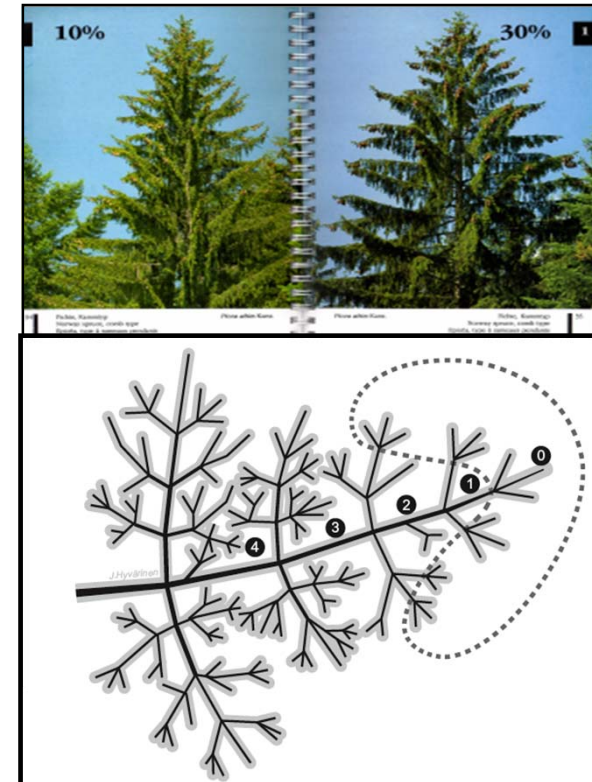
Productivity

- Needle weight (n=9 trees, 900 needles per tree, C0)
- Shoot length (n=9 trees, 45 shoots per tree, C0)

Photosynthetic efficiency

- Chl a fluorescence (n=9 trees, 15 shoots per tree, C0 and C1)

F_v/F_m = maximum quantum yield efficiency

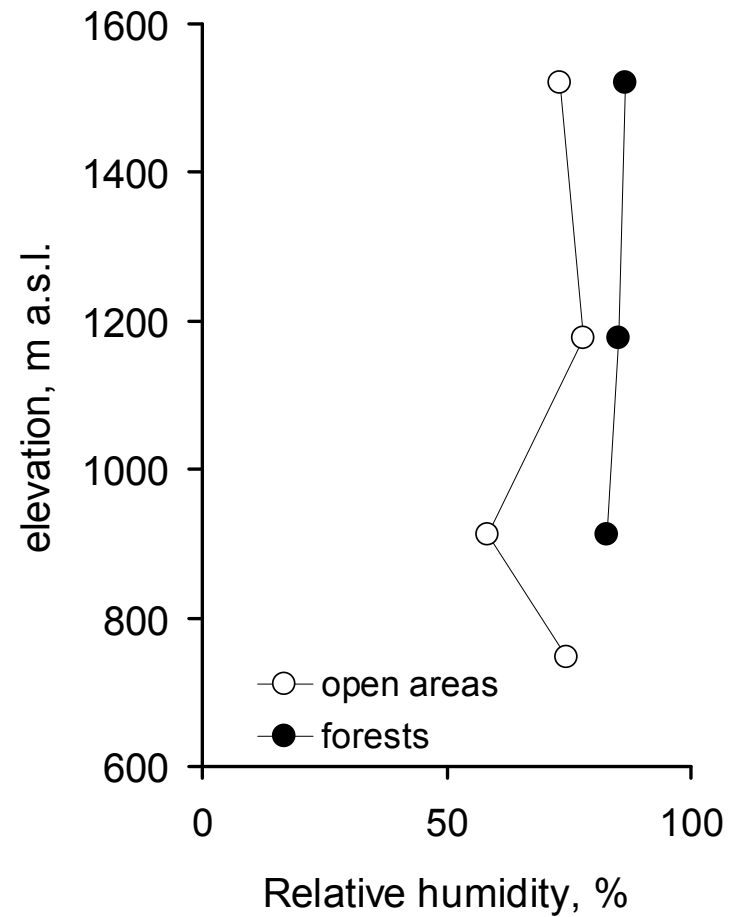
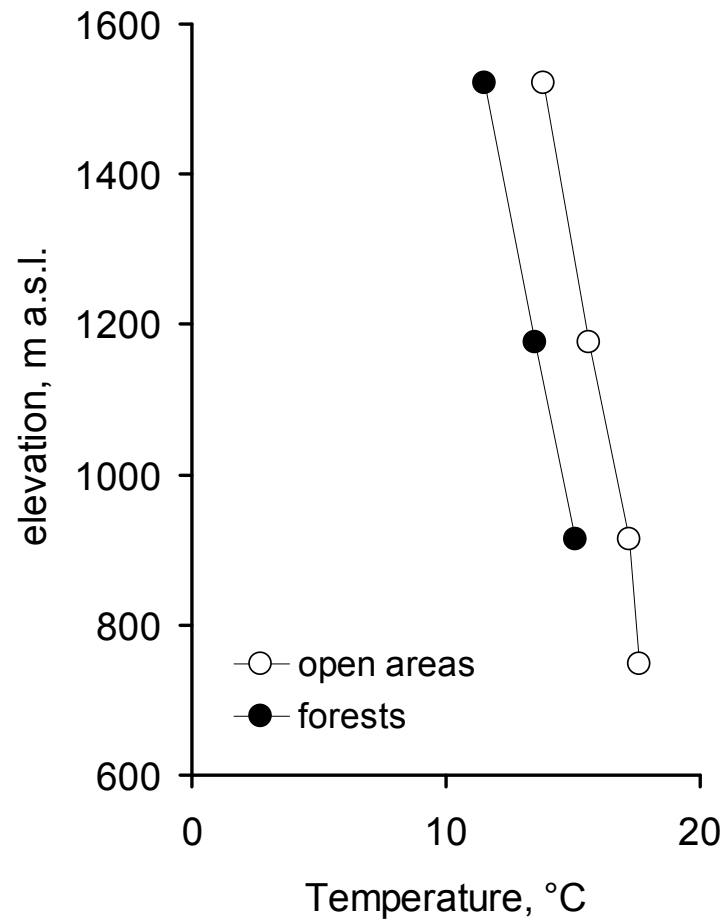


Scheme of the presentation

- Introduction
 - Ozone and impact on ecosystem services provided by forests
- The study on *Picea abies* along an altitudinal transect on Alps
 - Study design
 - Measurements of environmental and tree response variables
- Results
 - Environmental variables
 - Ozone removal
 - Relationship between ozone removal and
 - (i) structural/environmental variables
 - (ii) tree responses
- Discussion
 - Functional interpretation of monitoring data
 - Possible biological costs of removing ozone

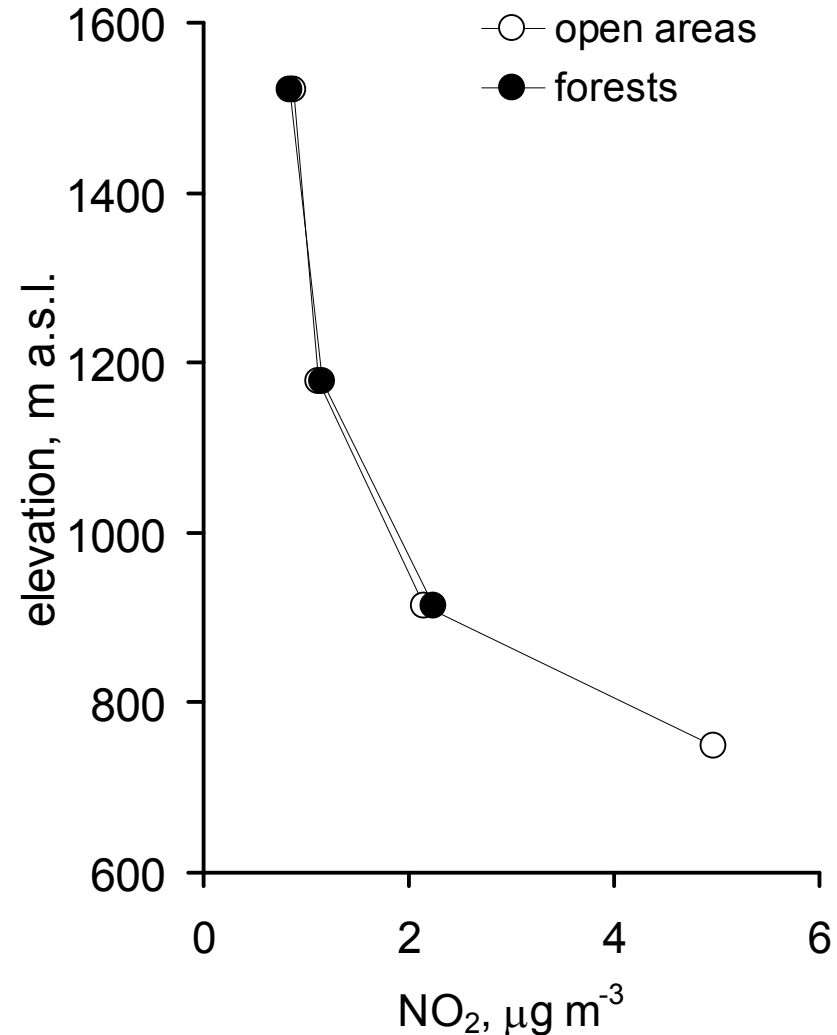


Altitudinal profile of T and RH concentration



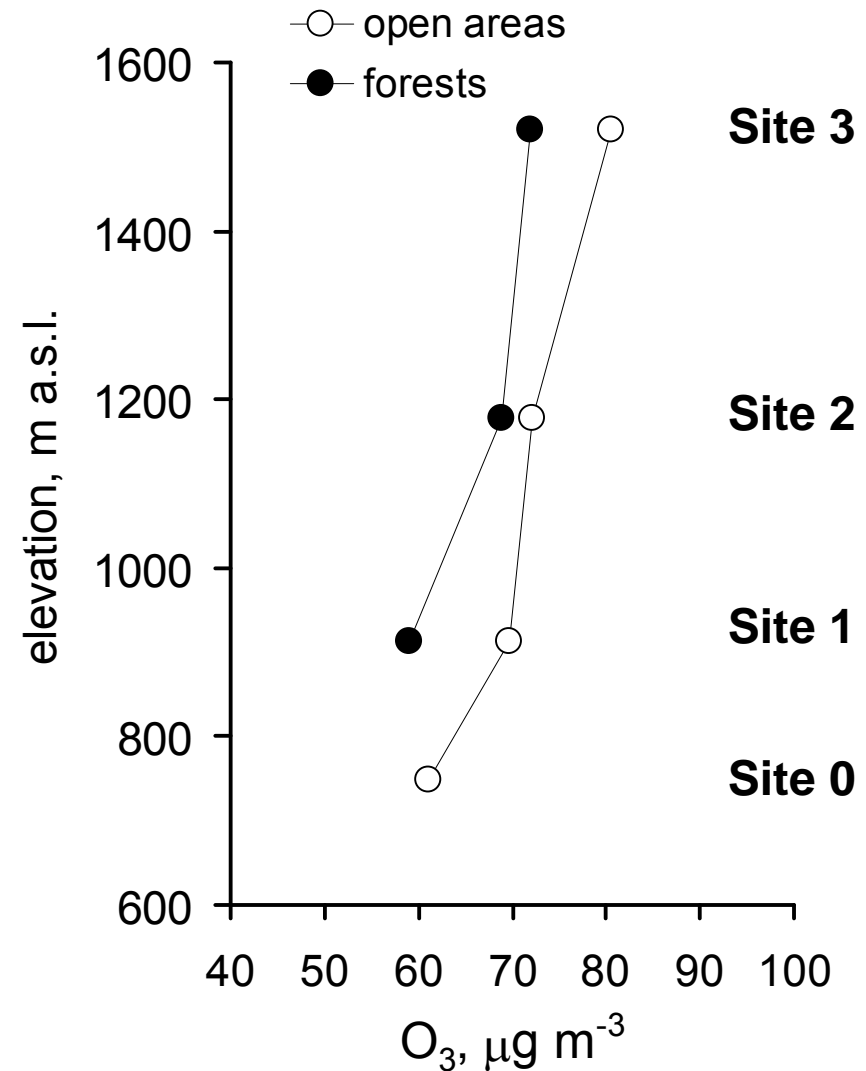
Altitudinal profile of NO₂ concentration

- Nitrogen dioxide concentration decreased with altitude, both inside and outside forests.
- Concentrations are very low (1.4 $\mu\text{g m}^{-3}$)

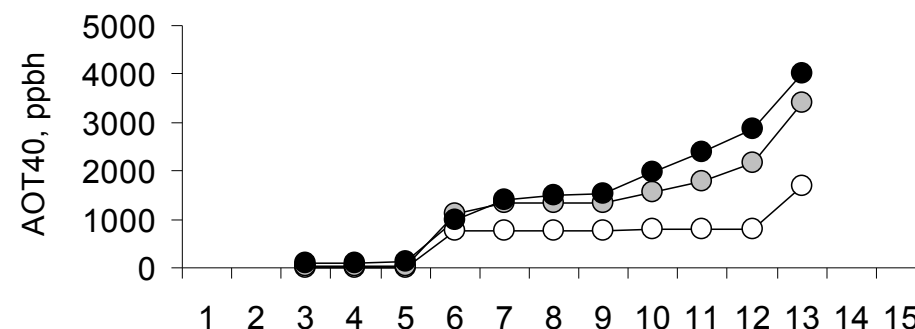
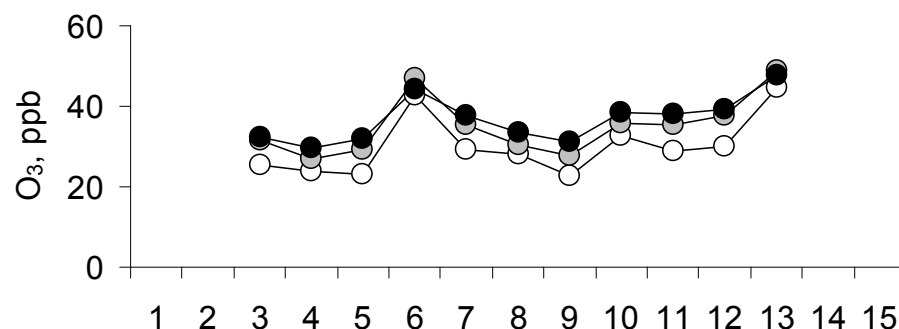


Altitudinal profile of ozone concentration

- Ozone concentration increased with altitude, both inside and outside forests.
- Lower ozone concentrations within the forest (64.8 $\mu\text{g m}^{-3}$) than in open areas (74.5 $\mu\text{g m}^{-3}$) ($P < 0.001$)

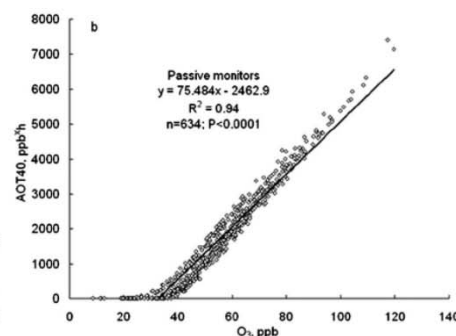
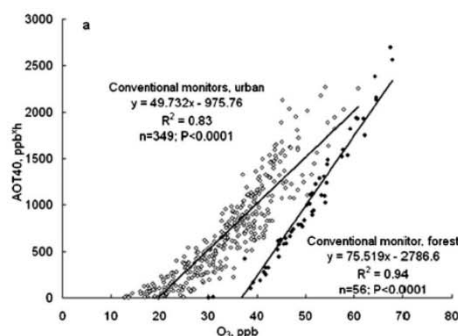


AOT40 estimation



Weekly O_3 concentration \longrightarrow Weekly AOT40

$$AOT40 = [O_3] \times 75.484 - 2462.9$$



Journal of
Environmental
Monitoring

Cite this: *J. Environ. Monit.*, 2012, **14**, 2238

www.rsc.org/jem

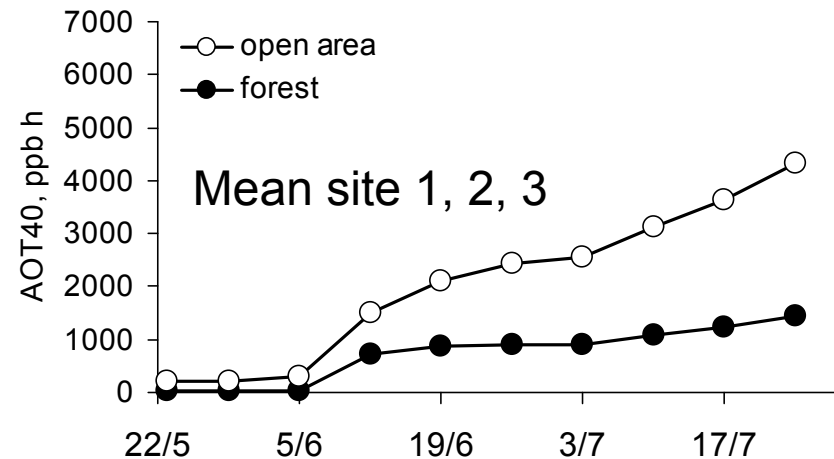
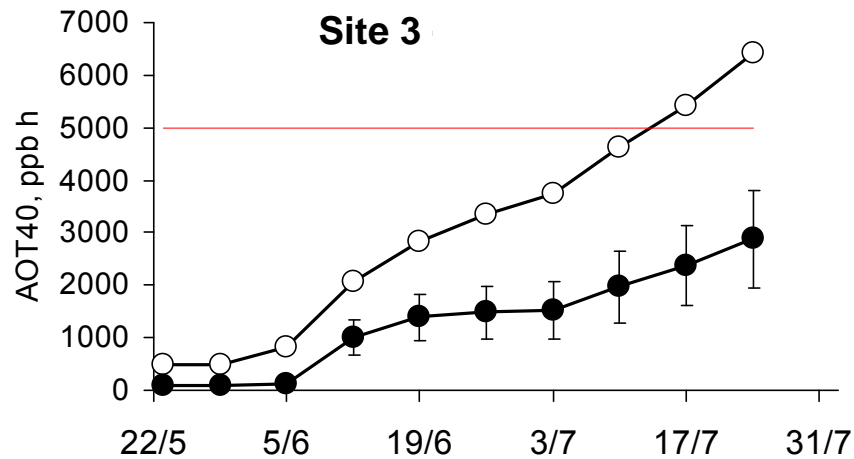
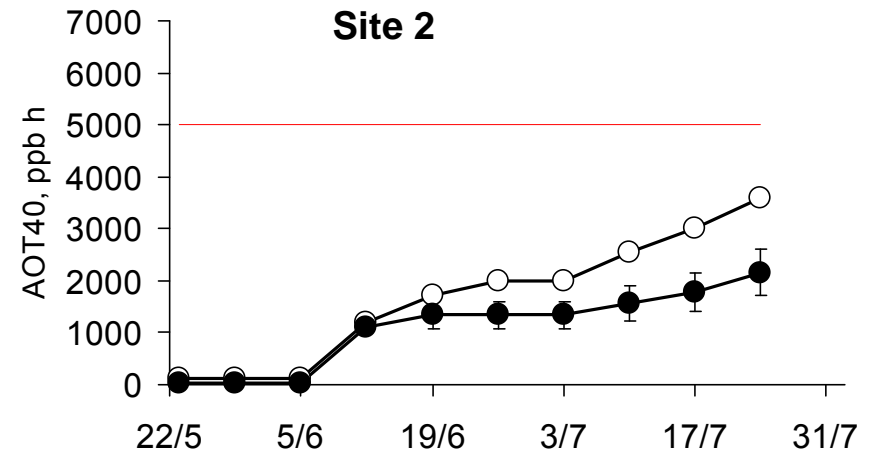
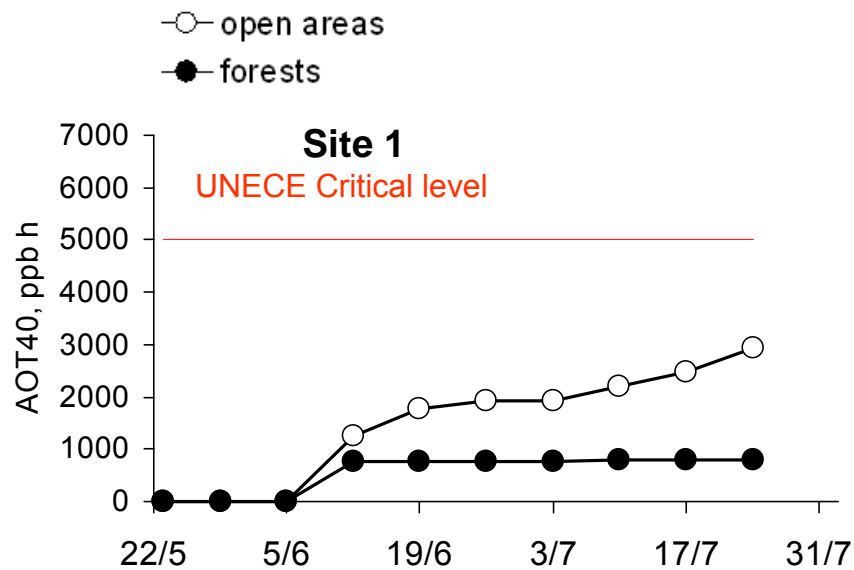
A simple linear model for estimating ozone AOT40 at forest sites from raw passive sampling data†

Marco Ferretti,^a Fabiana Cristofolini,^b Antonella Cristofori,^b Giacomo Gerosa^c and Elena Gottardini^b

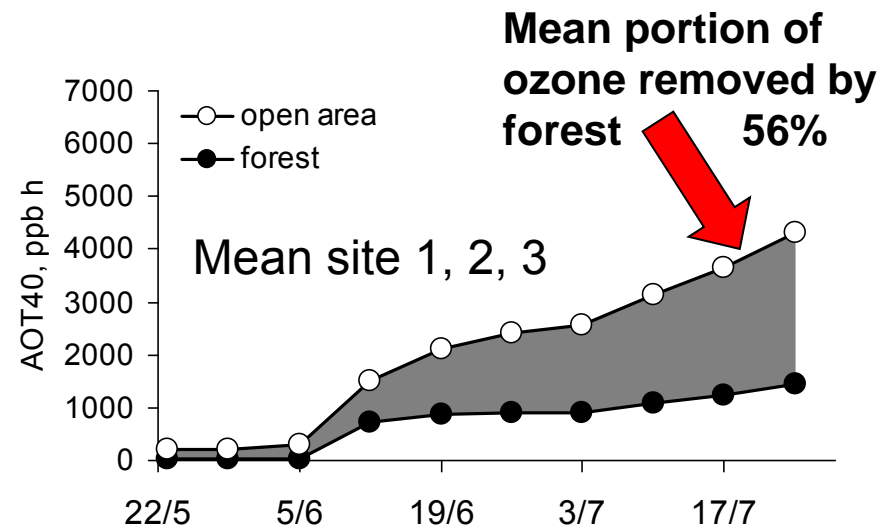
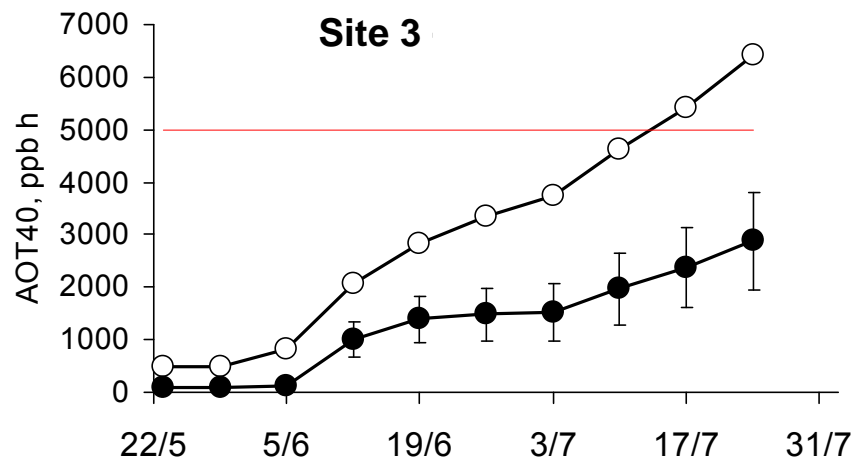
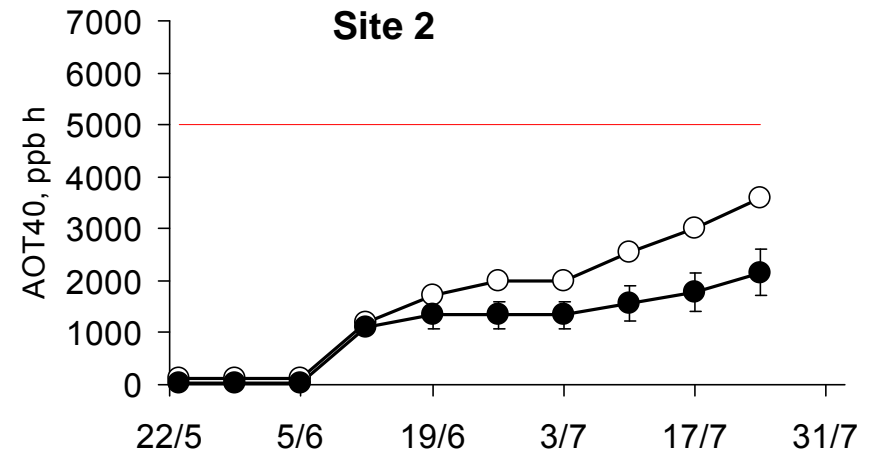
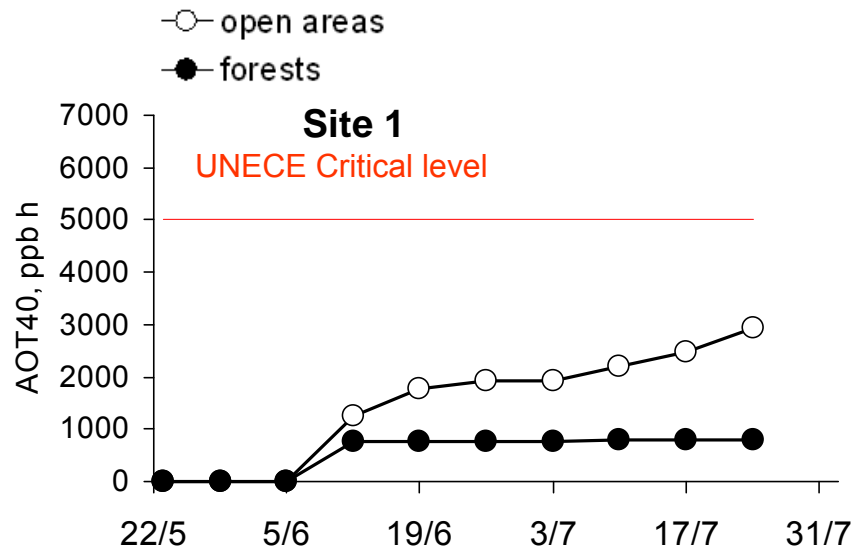
Dynamic Article Links ►

PAPER

AOT40: differences between open areas and forest



AOT40: differences between open areas and forest

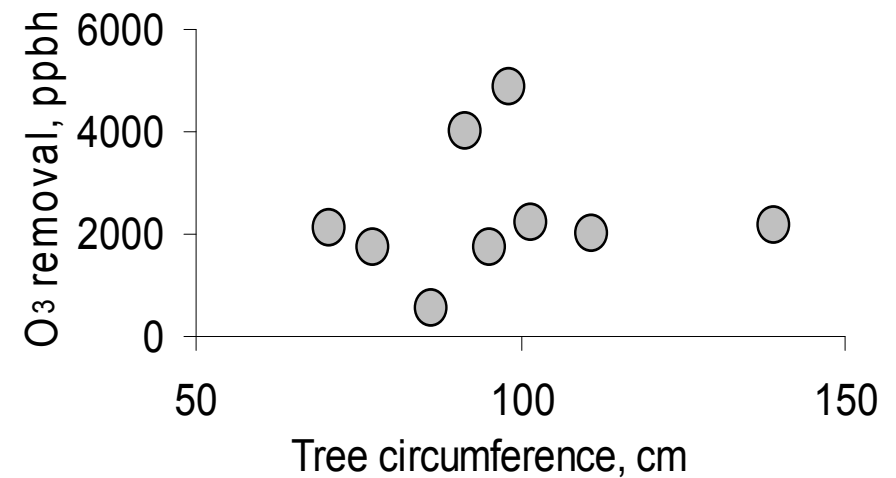
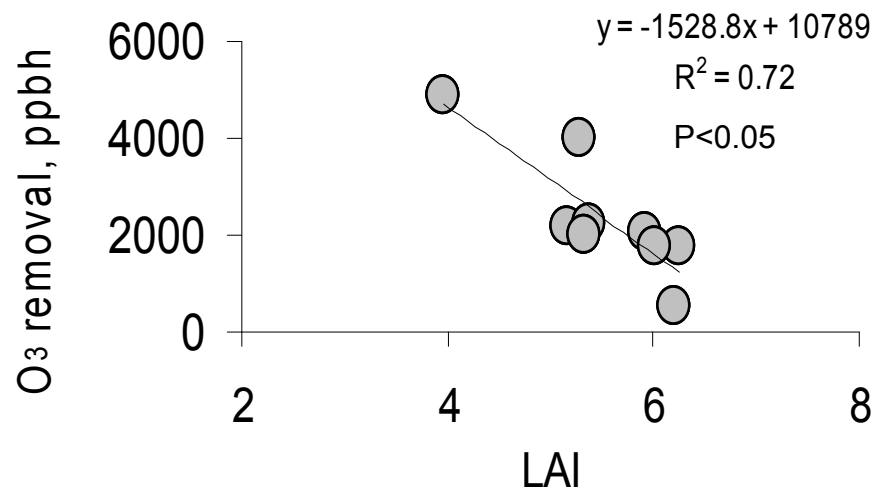
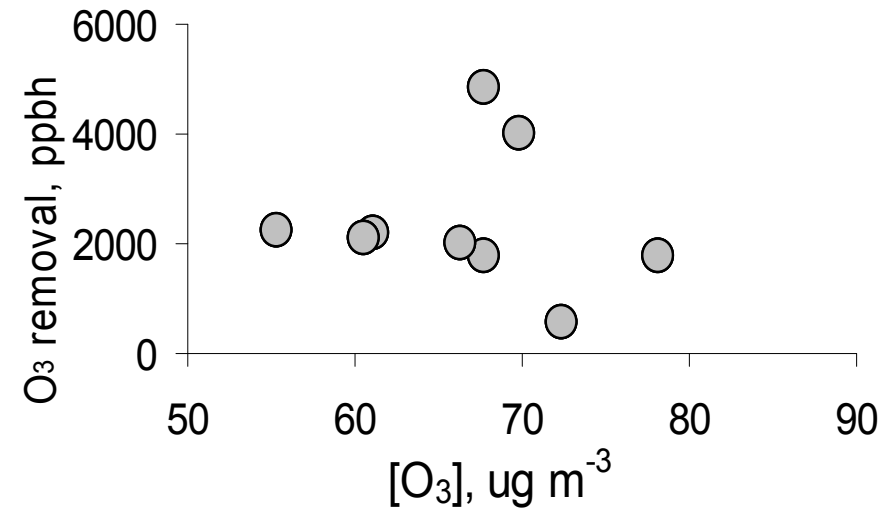
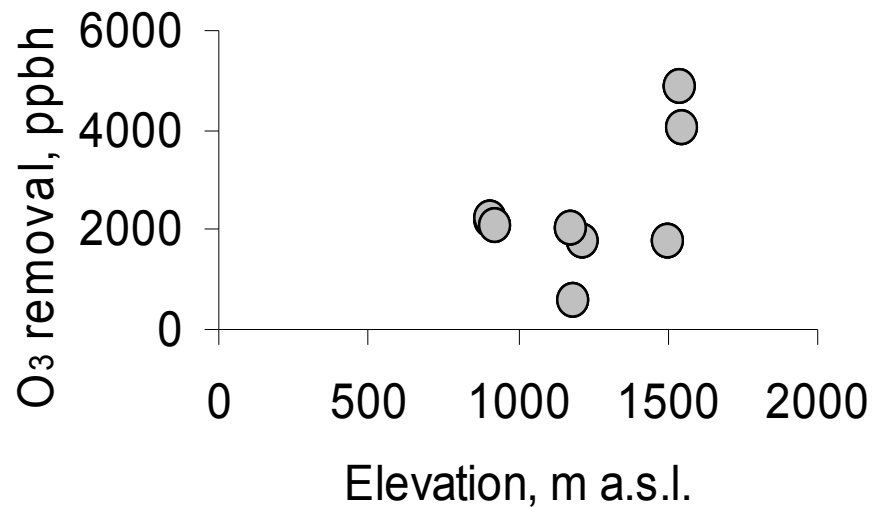


- Is there a relationship between ozone removal and environmental/structural factors?

- Elevation
- Ozone concentration
- LAI
- Tree circumference



Ozone removal vs. environmental/structural factors



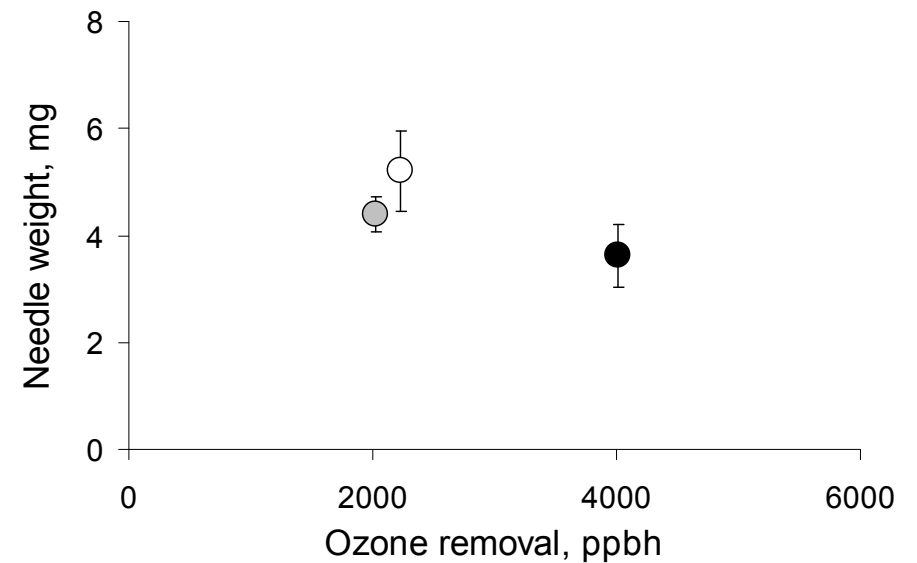
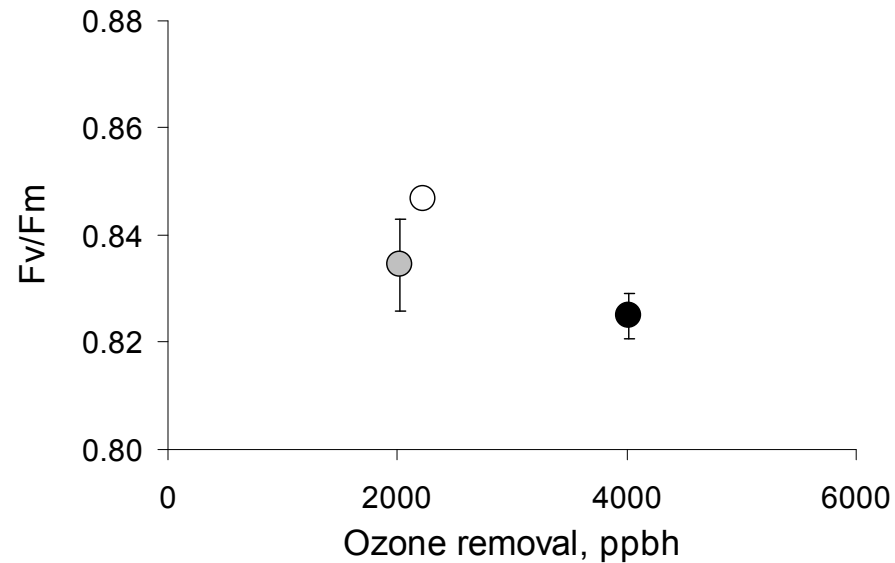
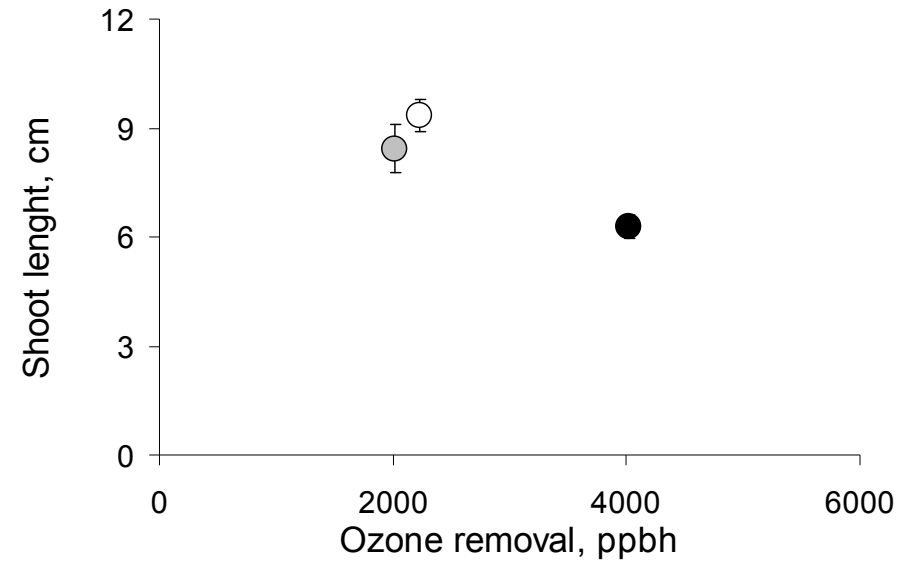
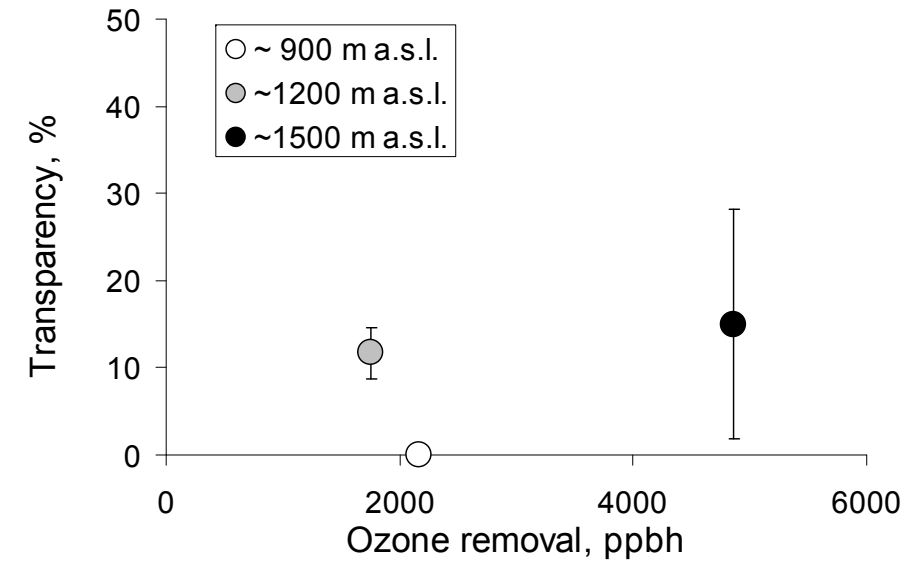
- Is there a biological “cost” for plants because of ozone removal?

Response indicators:

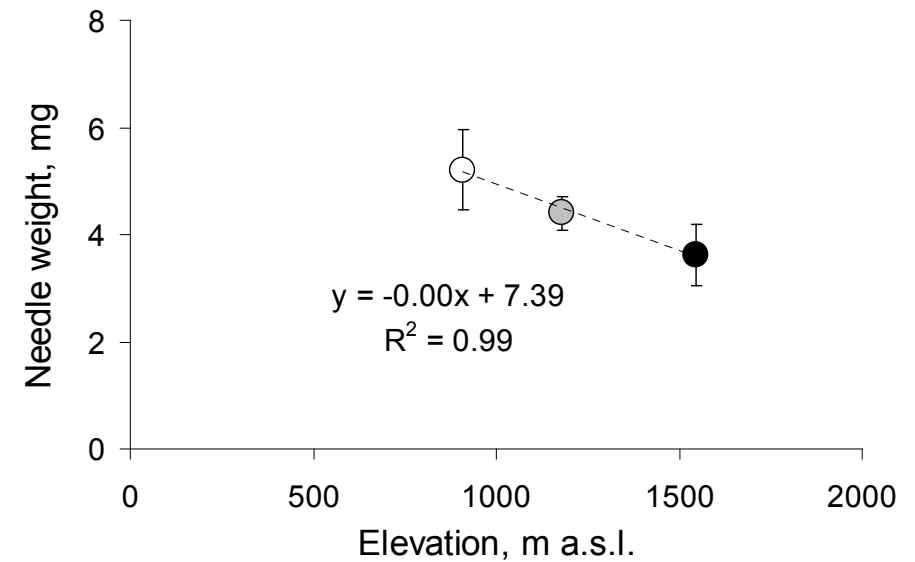
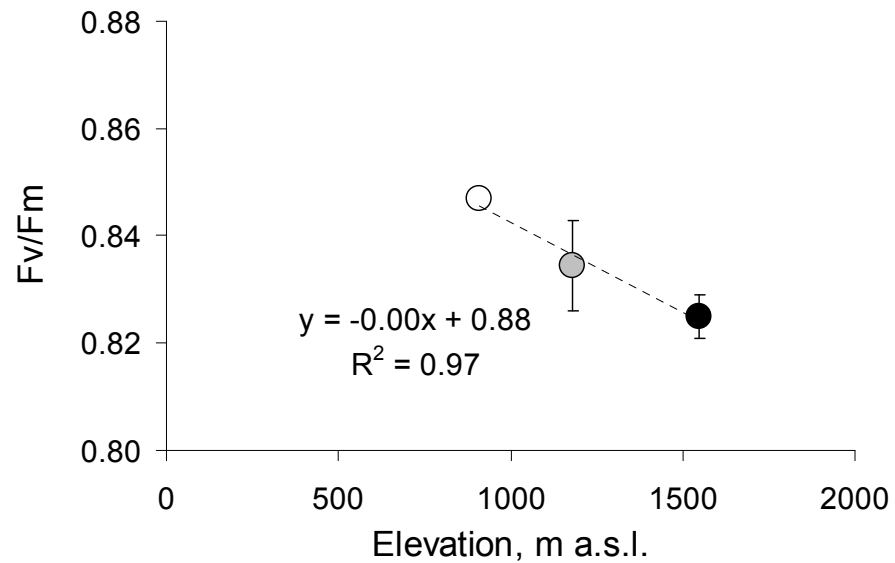
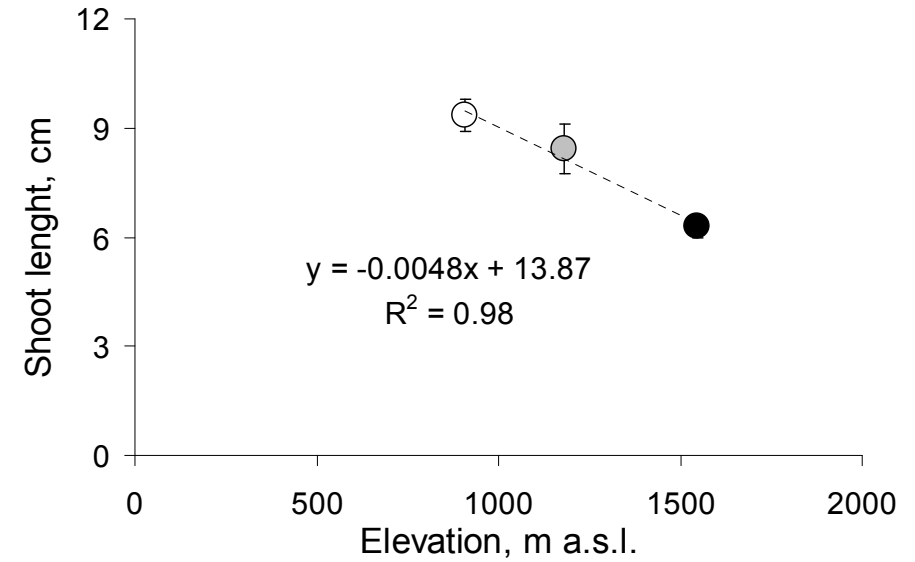
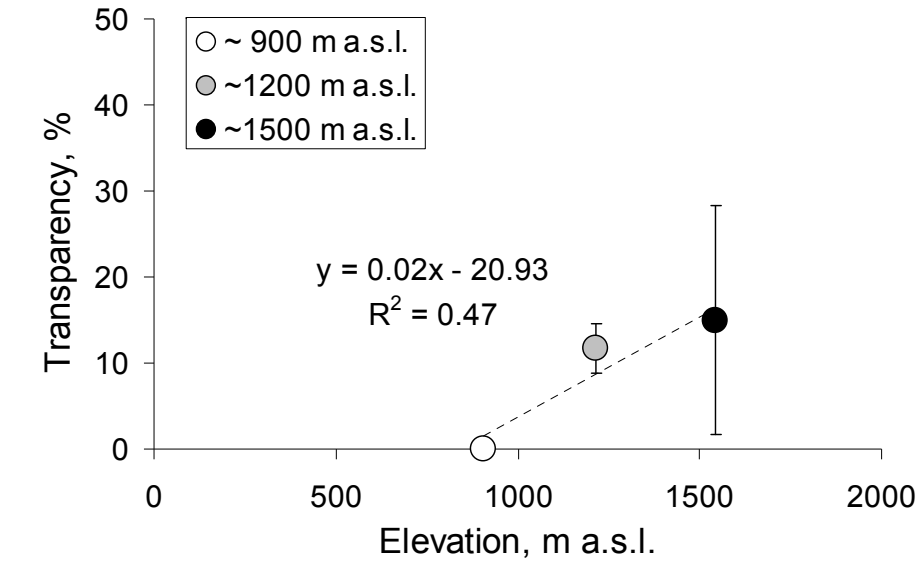
- Transparency
- Shoot lenght, needle wheight
- Chlorophyll fluorescence



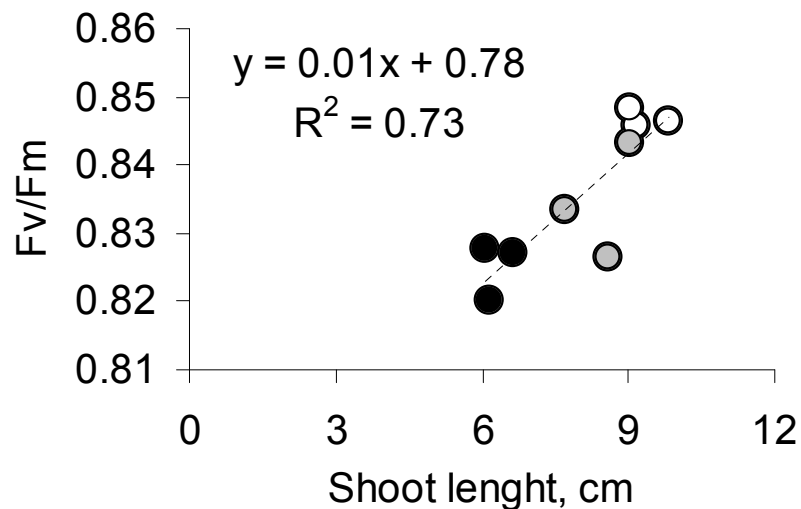
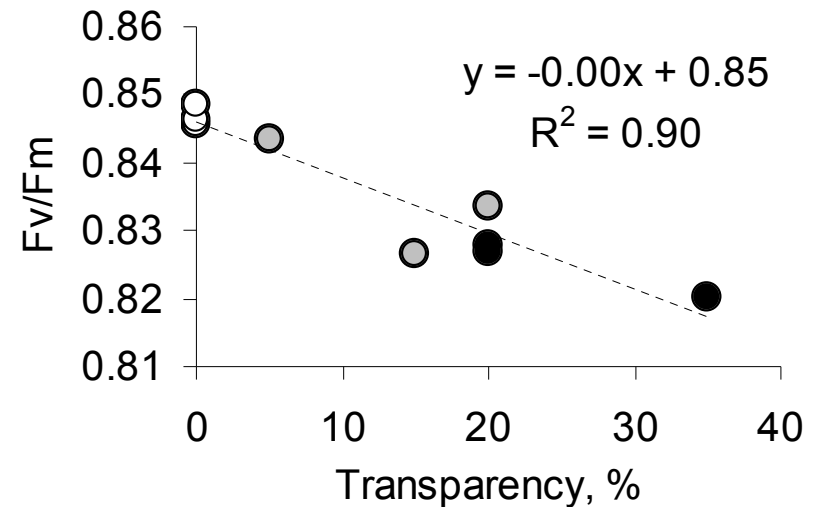
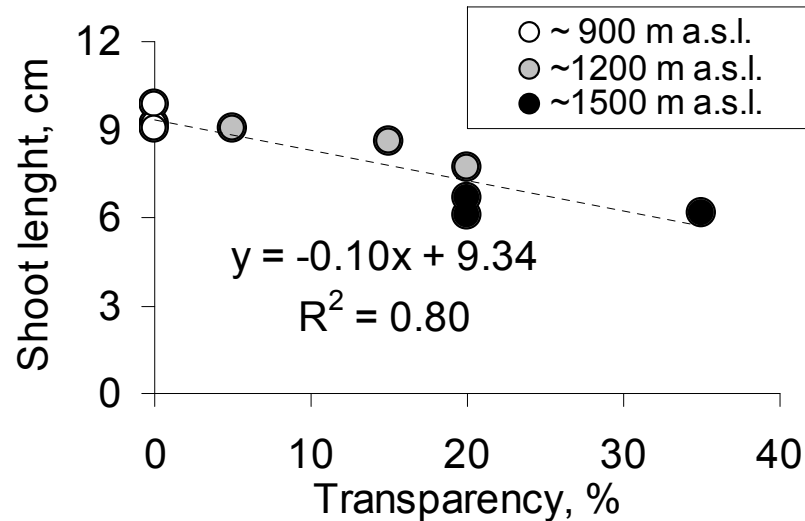
Ozone removal vs. tree responses



Elevation vs. tree responses



Relationship among tree responses



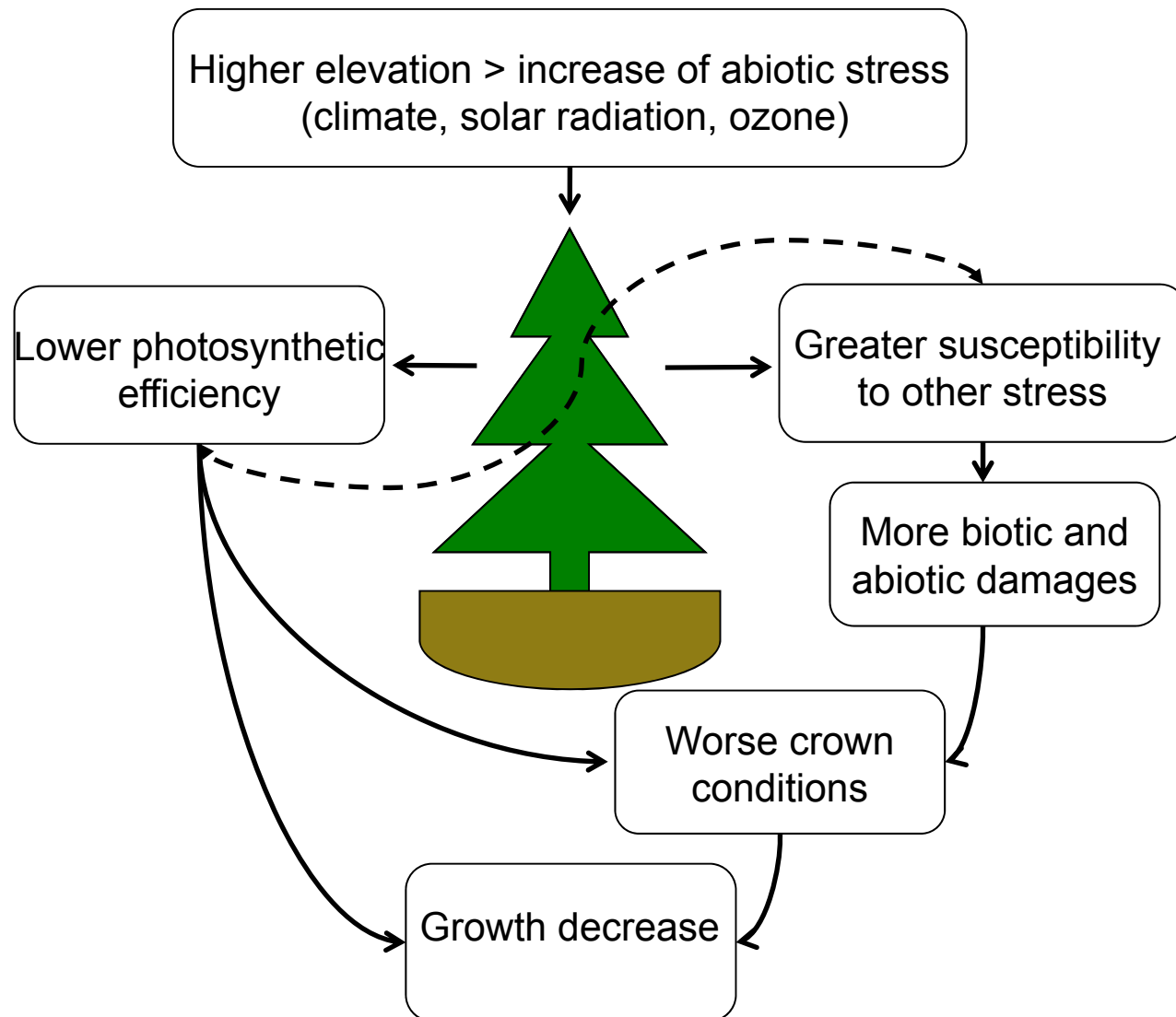
Nested within such a superimposed effect of the elevation, the various response indicators were related to each other

Scheme of the presentation

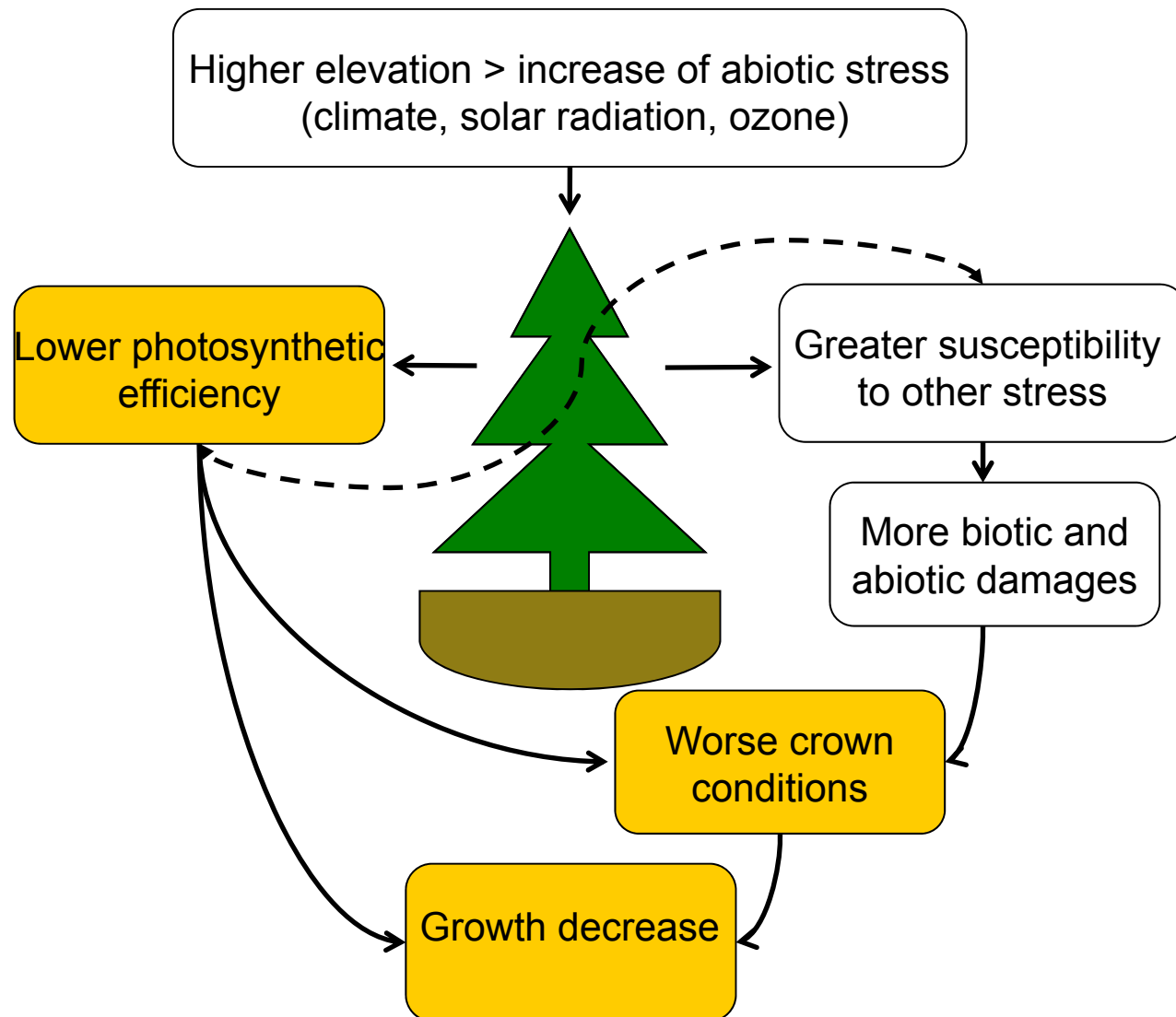
- Introduction
 - Ozone and impact on ecosystem services provided by forests
- The study on *Picea abies* along an altitudinal transect on Alps
 - Study design
 - Measurements of environmental and tree response variables
- Results
 - Environmental variables
 - Ozone removal
 - Relationship between ozone removal and
 - (i) structural/environmental variables
 - (ii) tree responses
- Discussion
 - Functional interpretation of monitoring data
 - Possible biological costs of removing ozone



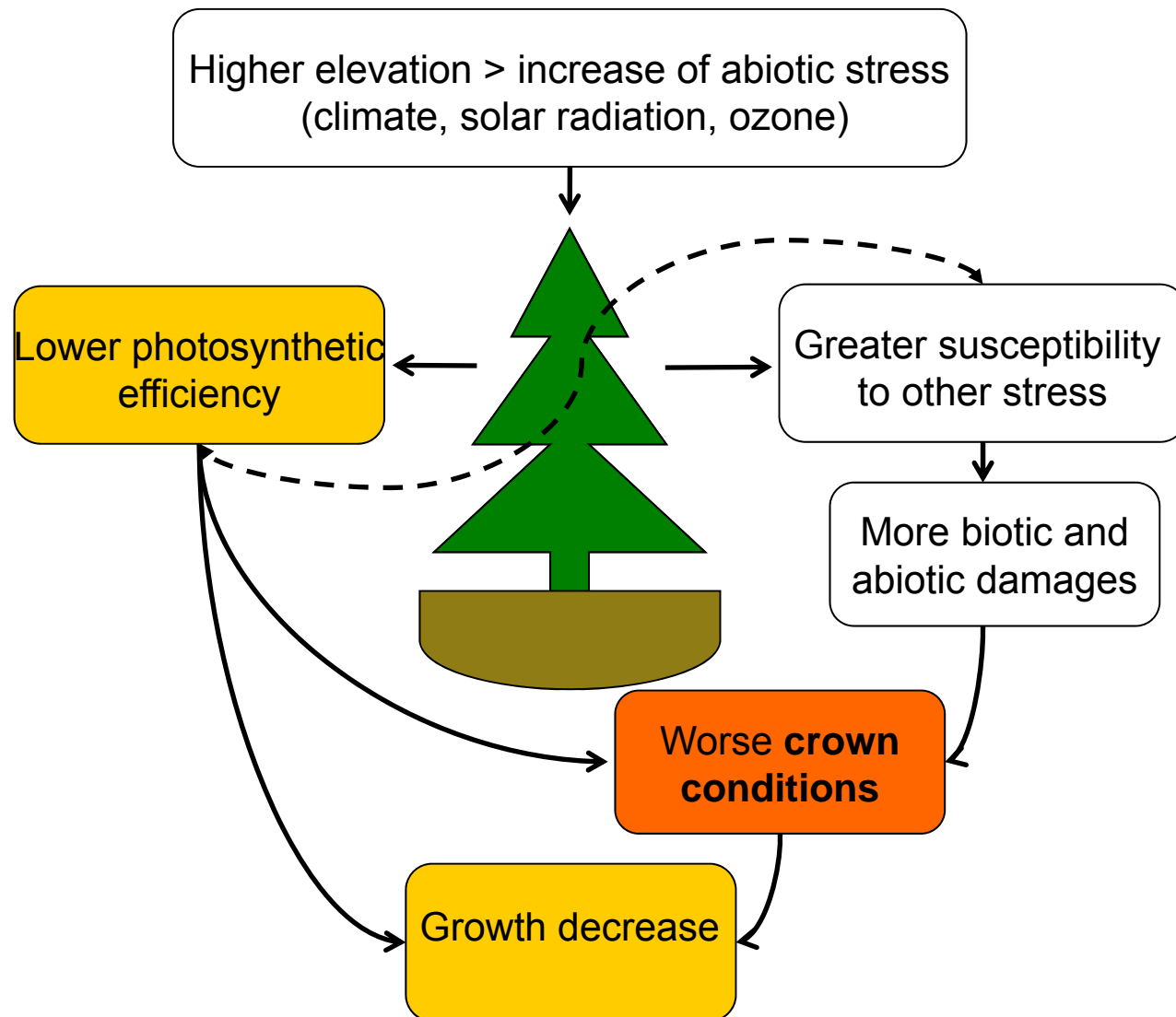
Functional interpretation of monitoring data



Functional interpretation of monitoring data



Functional interpretation of monitoring data



Possible biological costs of removing ozone

- Vegetation provides ecosystem services → ozone removal
- Ozone removal resulted:
 - slightly dependent on elevation and on ozone concentration
 - slightly associated to lower productivity and photosynthetic activity, and higher crown transparency
- Thus, ozone removal seems to have a slight (if any) “biological cost”
- Plants are able to play an important role in regulating services - like ozone removal - also where environmental conditions are more stressful
- Side findings: data suggest a possible functional interpretation of forest health monitoring data

Acknowledgments

Forest and Fauna Service
of Autonomous Province of Trento

Parco Naturale Paneveggio, Pale di San Martino

